

SUPASCREEN®



CLEARGUARD®



AMPLIMESH® GRILLE



SPECIFICATIONS

SupaScreen	316 Marine Grade Stainless Steel Mesh
Perforation	Hole Aperture 1.6mm
Door Frame	Series 7295
Window Frame	Series 7711
Assembly	Patented Co-Extruded Plug
Hinges	Zinc Plated steel with stainless steel pins
Locks	Austral or Whitco single point or three point locks

STANDARD COLOURS

Powder Coated	White & Mid Bronze
Anodised	Natural & Bronze
Custom Colours	Dulux® Duralloy® colour matched to existing joinery
Mesh	Black only

SPECIFICATIONS

Clearguard	Perforated Hardened Aluminium Mesh
Perforation	Hole Aperture 2.2mm
Door Frame	Series 8295
Window Frame	Series 7811
Assembly	Patented Co-Extruded Plug
Hinges	Zinc Plated steel with stainless steel pins
Locks	Austral or Whitco single point or three point locks

STANDARD COLOURS

Powder Coated	White & Mid Bronze
Anodised	Natural & Bronze
Custom Colours	Dulux® Duralloy® colour matched to existing joinery
Mesh	Black only

SPECIFICATIONS

Amplimesh Grille	7mm Series 103, 125
Door Frame	Series 9295 or 6661
Window Frame	Series 5663 & 6179
Hinges	Zinc Plated steel with stainless steel pins
Insect Mesh	Juralco Fibreglass 17x14 Mesh / Pet Resistant Mesh / Look-out™
Locks	Austral or Whitco single point or three point locks

STANDARD COLOURS

Powder Coated	White & Mid Bronze
Anodised	Silver & Mid Bronze
Custom Colours	Dulux® Duralloy® colour matched to existing joinery
Grille	Colour matched

ADDITIONAL FEATURES

Pet Resistant Mesh

Made of vinyl coated polyester, this fabric is much heavier than traditional fibreglass or aluminium screening. Resistant to tears or damage caused by most pets.

Pet Doors

These fit to all Security Doors. Made from UV stabilised plastic, with magnetic closers, pet doors are available in 3 sizes & 2 colours.

Look-out™ One Way Vision Mesh

With the correct light, Look-out One Way Vision Mesh allows a person on the inside to see out, but not be seen from the visitor's side.

D-Plate

Prevents tearing of mesh when opening or closing the security door.

Heavy Duty Closer

Available for hinged or sliding doors.



Hinged shown

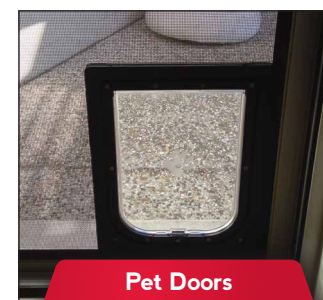
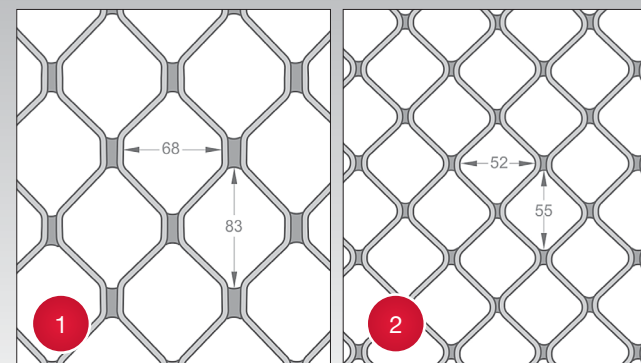
Caretaker™ Function

The patented Caretaker one-way locking function allows a door to be snib locked from the outside, (but not unlocked) by a Caretaker key. This enables occupants to unlock the door by simply operating the inside snib lever (without the need for a key). The door can then be opened by pushing down on the unlatching lever.



GRILLE OPTIONS

- 1 Grille 103 Standard
- 2 Grille 125 Compact



Pet Doors



Pet Resistant Mesh



Look-out™ Mesh

AUSTRAL SECURITY DOOR LOCK OPTIONS*

The Ultimate™ for Hinged Doors

The Elegance™ for Hinged Doors

The SD7 Murray™ for Sliding Doors



Jemmy Resistant Parrot Beak Lock Tongue, Caretaker function

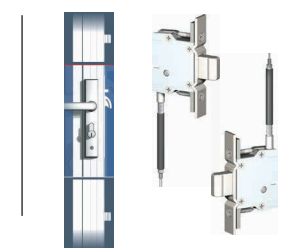


Jemmy Resistant Tongue with deformable strike plate



Anti-lift pin on built-up strike prevents door being lifted out

Three Point Locking Systems



Door is held in place at the top, middle and bottom for extra Security. Available for Ultimate, Elegance & SD7 Murray

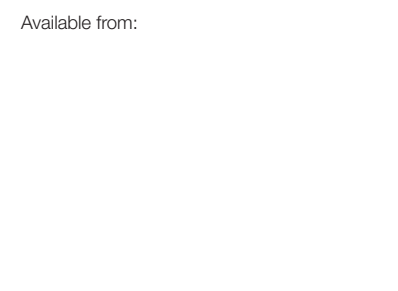
Jemmy Resistant Strike Plate



Jemmy resistant strike plate deforms under attack, leaving door locked & secured. Standard for Ultimate and Elegance hinged door lock

*For warranty terms & conditions see www.homeplus.co.nz

*Whitco Tasman MK2 and Leichardt Locks (not illustrated) also available



Available from:

Our team of professionals will help you to customise your new security screen, with an onsite consultation that includes a free measure and quote. For more information call your local HomePlus store on **0800 466 375**



www.homeplus.co.nz

HBR/SECURITY/20

The products in this catalogue are the subject of intellectual property protection. HomePlus®, the HomePlus Device® are registered trademarks of Juralco Aluminium Building Products Ltd. All dimensions given are approximate and should be checked prior to installation. Photographs or illustrations may not exactly match the specification available in your area. Please consult your nearest HomePlus display centre for advice. - ©Juralco Aluminium Building Products Ltd 2017.

HOMEPLUS® SECURITY DOORS & WINDOWS



FOR FREE MEASURE AND QUOTE CALL 0800 466 375

www.homeplus.co.nz

SUPASCREEN®

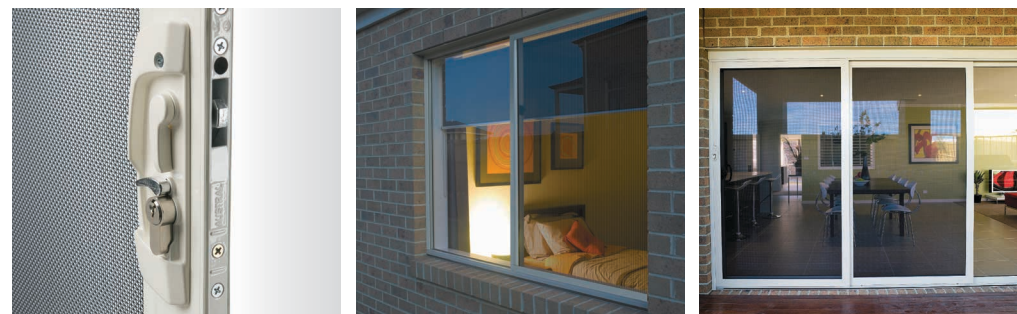
PRODUCT FEATURES AND BENEFITS

- Security Door tested to Australian Standards AS5039-2008
- Enjoy clear unobstructed views
- Maximum strength and durability
- High tensile 316 marine grade stainless steel
- Modern innovation
- Unique patented pressure assembly process
- Corrosion resistant
- 10 year warranty
- Available in a range of frame colours
- Standard hardware included
- Optional 3 point locking mechanism
- Hinged / Sliding / French / Stacker Door Systems / Windows



- Security Testing
- Knife Shear
- Salt Spray Tested
- Cyclonic Missile Impact

AUSTRALIAN STANDARDS



ENJOY THE VIEW AND STILL BE SECURE

Supascreen security door and window screens are an innovative design allowing unobstructed views, whilst maximising strength and security. Produced from high tensile stainless steel that is woven into a fine mesh, Supascreen provides exceptional security and an aesthetically pleasing appearance.

Screens are assembled using a unique patented pressure assembly process, eliminating the need for screws or rivets. This means no dissimilar metals come into contact with the mesh, eliminating this as a possible cause of corrosion.

With unrestricted views through the fine mesh screen, Supascreen can be installed in settings such as front entrances without comprising the appearance of the home. By colour matching frames to the existing joinery, Supascreen blends into the surroundings providing total security without compromise.

Mesh style – Woven



316 Marine Grade Stainless Steel

CLEARGUARD®

PRODUCT FEATURES AND BENEFITS

- Security Door tested to Australian Standards AS5039-2008
- See through screen doesn't block view
- Superior structural grade aluminium alloy mesh
- Unique patented pressure assembly process
- Reduces heat and glare
- 7 year warranty
- Available in a range of frame colours
- Standard hardware included
- Optional 3 point locking mechanism
- Hinged / Sliding / French / Stacker Door Systems / Windows



- Security Testing
- Knife Shear

AUSTRALIAN STANDARDS



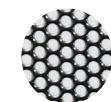
LET'S LET THE FRESH AIR IN, BUT THAT'S ALL

Clearguard® is the latest innovation in home security screens in NZ - a modern replacement for Amplimesh grilles and an alternative to premium woven stainless steel Supascreen mesh. The screens are assembled using a unique patented pressure assembly process, eliminating the need for screws or rivets.

Clearguard® screens use hardened 1.6 mm thick aluminium sheets that are less intrusive than the traditional aluminium diamond grilles. An innovative design formed by punched holes means that Clearguard® screens are virtually translucent, providing quality security without blocking your view.

Clearguard® can be relied on for security, particularly in summer when you want to leave doors and windows open to let the breeze flow through. The quality of Clearguard® is matched by strong aluminium frames which can be colour coated to match your joinery.

Mesh style – Perforated



1.6mm hardened aluminium sheet

Note: Some vertical 'read' lines will be visible when viewing up close

AMPLIMESH® GRILLE

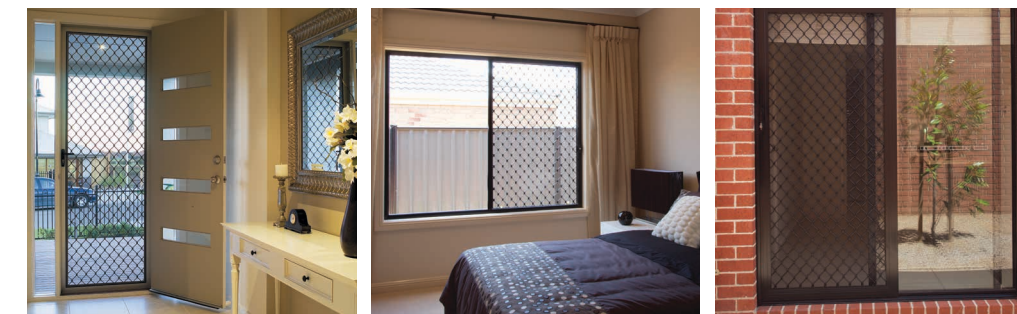
PRODUCT FEATURES AND BENEFITS

- Security Door tested to Australian Standards AS5039-2008
- Visual deterrent
- 50 years in the market
- Choice of grilles which can be colour coated
- Fibreglass insect mesh standard feature
- Pet Resistant and Look-out™ One Way vision mesh optional
- 5 year warranty*
- Available in a range of frame colours
- Standard hardware included
- Entry level security for doors and windows
- Optional 3 point locking mechanism
- Hinged / Sliding / French / Stacker Door Systems / Windows



- Security Testing

AUSTRALIAN STANDARDS



VISUALLY DETERRING UNWANTED GUESTS

Amplimesh® grille window and door screens offer you peace of mind against uninvited visitors. They not only visually deter unwelcome guests, but offer a high quality physical barrier against anyone that does attempt to break-in. With insect mesh as a standard feature on all Amplimesh® screens, homeowners are able to enjoy open doors or windows without enticing in mosquitos, flies or thieves.

With over 50 years of experience in the NZ security screen market, Amplimesh® is recognised for its superior quality and longevity, reassuring thousands of customers that their security is taken care of. Security screens from the Amplimesh® range are available in a variety of grille styles, with both the grille and frame colour matched to existing joinery.

Mesh style – Expanded



Aluminium grille 103



Aluminium grille 125

*Fibreglass insect mesh excluded