



AUTHORISED DEALER



**AMPLIMESH**<sup>®</sup>  
SECURITY PRODUCTS



**HOMEPLUS**

*Custom made for your home*

**SECURITY DOORS & WINDOWS**

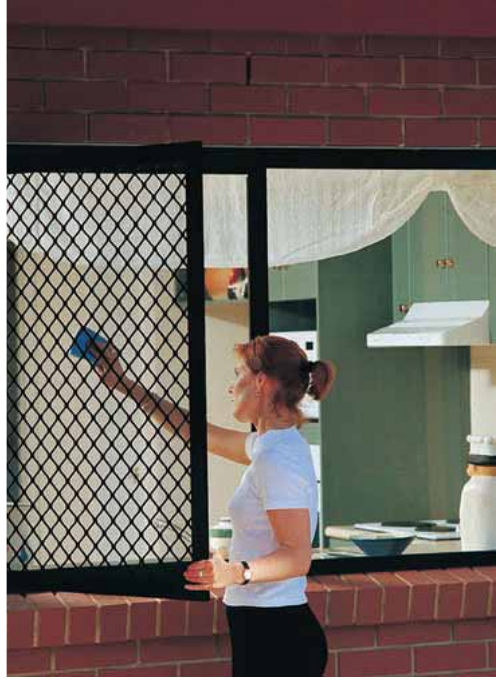
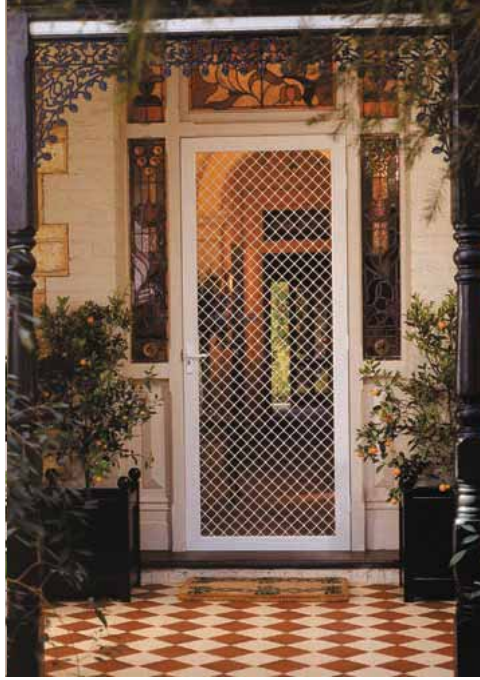
**AMPLIMESH® GRILLE 103**



**AMPLIMESH® GRILLE 122**



**AMPLIMESH® GRILLE 125**





## VISUAL DETERRENT TO UNWANTED GUEST

Grille type windows and door screens provide a visual deterrent and effective protection against uninvited guests. Amplimesh custom-made Security Doors and Windows allow you to make the most of the warm weather by letting the breeze through your home - while still being secure, reducing the risk to you and your property.

Open windows and doors can make your home an enticing option for mosquitoes, flies and thieves. Avoid becoming another crime statistic and protect your home from unwelcome guests with Amplimesh Security Doors and Windows, the security choice of New Zealanders for over 40 years.

Amplimesh Security Grille 103,122, 125 and 106 are recognised in the marketplace for the strength of materials used. With a thickness of 7mm Amplimesh Grilles meet and exceed the requirements of Australian Standard AS5039. The exclusive frame, security grille and corner stakes are manufactured to comply with AS/NZS 1866. Powder-coating and anodising is also finished to comply with one of the following Standards - AS 3715, WANZ Endurocolour and WANZ SFA 3503-03.

All Grilles can be colour matched to existing joinery.

## SPECIFICATIONS

Amplimesh Grille:	7mm Series 103,122,125,106
Door Frame:	Series J9295 or J6661
Window Frame:	Series J5663
Hinges:	Zinc Plated steel with stainless steel pins
Insect Mesh:	Juralco Fibreglass 18x16 Black Pet Resistant Mesh or Look-out one-way vision mesh
Locks:	Austral or Whitco single point or triple point locking systems
Colours:	Standard Colour Selection: Powder-Coated White, Off-White, Mid-Bronze, Anodised Bronze & Satin Silver
Custom Colours:	Matched to existing joinery

## JURALCO AUSTRAL SECURITY DOOR LOCK OPTIONS\*



The 'Ultimate' for Hinged Doors

The 'Elegance' for Hinged Doors

SD7 with Keeper for Sliding Doors

Triple Point Locking System

Caretaker function, Jemmy Resistant Parrot Beak lock tongue, Increased Bolt Clearance

Caretaker function, Jemmy Resistant deformable strike plate

Anti-lift pin provides greater clearance & prevents door being lifted out.

Door is held in place at the top, middle and bottom for extra Security. Available for Ultimate, Elegance & SD7.

## Caretaker® Function

Lock from the outside without a key, so that the person inside can easily unlock by snib (without key) - ideal in case of an emergency. When the house is unoccupied, it can be fully key dead-locked to meet insurance requirements. Included in Elegance and Ultimate door locks.

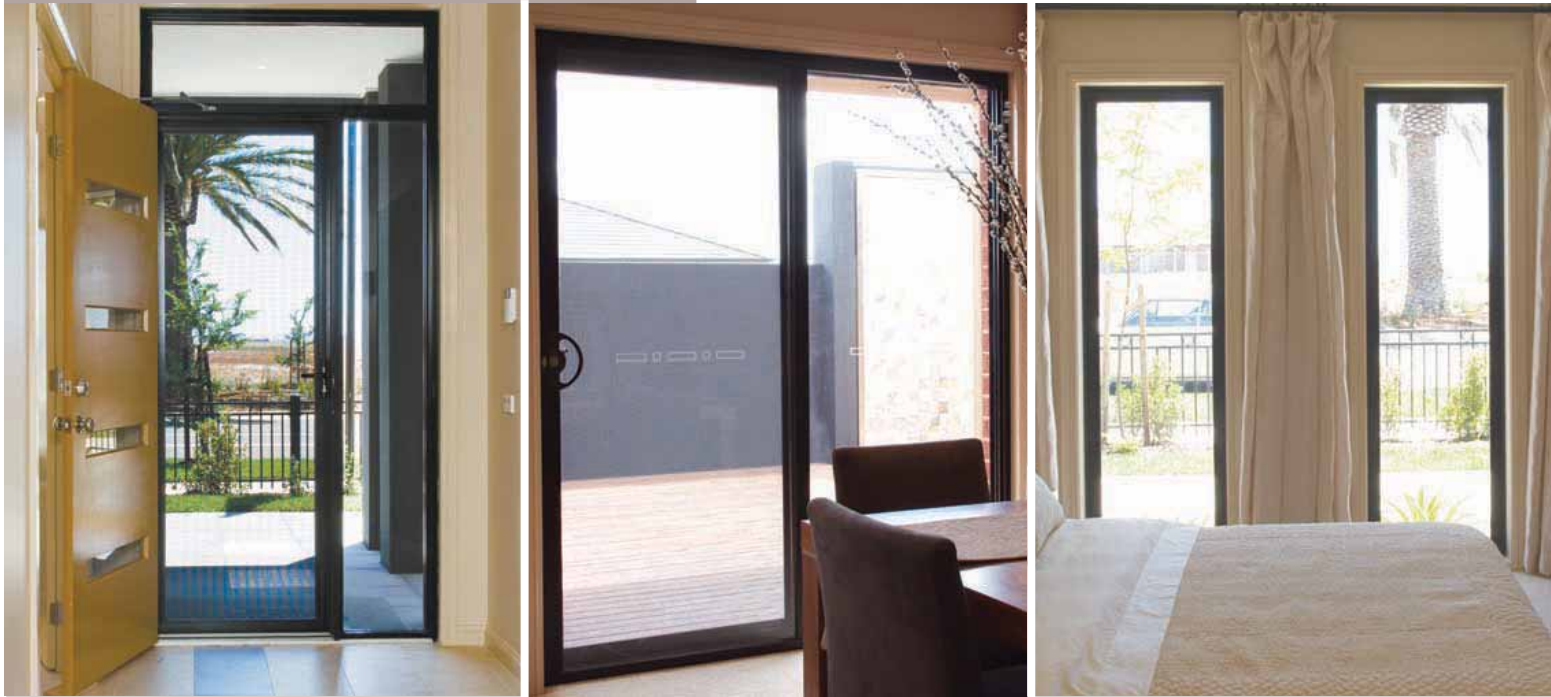


## Jemmy Resistant Strike Plate

Jemmy resistant strike plate deforms under attack, leaving door locked & secured.



\* Whitco Tasman and Leichardt Locks (not illustrated) also available.



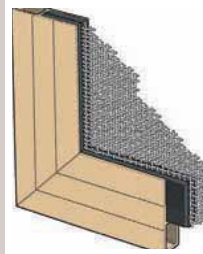
## SEE THROUGH SUPER STRENGTH MESH

Supascreen may look like a flyscreen, but is actually high tensile marine grade 316 stainless steel woven into a fine mesh. Supascreen is assembled using a unique, patented pressure process that eliminates the need for screws or rivets. The process ensures that different metal surfaces do not come into contact with each other, eliminating the possibility of corrosion.

The heavy duty Supascreen frame is manufactured to comply with AS/NZS 1866. Powder coating and anodising is finished to comply with AS 3715. Supascreen has been tested to Australian Standard AS 5039 and AS 5041, WANZ Endurocolour or WANZ SFA 3503-03.

Supascreen comes with high quality triple point locking systems as standard, firmly anchoring top, centre and bottom.

## SPECIFICATIONS



Supascreen: 316 Marine Grade Mesh (Black Only)

Door Frame: Series J7295

Window Frame: Series J7711

Supascreen Patented Co-Extruded Plug

Hinges: Zinc Plated steel with stainless steel pins

Locks: Austral or Whitco triple point locking systems

Colours: Powder-Coated White, Off-White, Mid-Bronze, Anodised Bronze & Satin Silver

Custom Colours: Matched to existing joinery

## AESTHETICALLY PLEASING

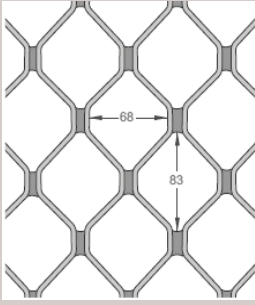
SupaScreen is particularly suited to front doors as it provides a welcoming entrance and won't compromise the appearance of your home. Supascreen blends in aesthetically - the frames can be perfectly matched to the existing joinery frames and because it is so clear it does not detract from the look of your home.

Supascreen gives you a clear, unobstructed view of your garden and the outdoors and lets the cool breeze flow through your home.

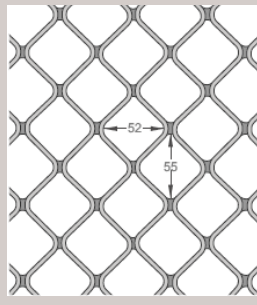
You can leave the doors open on warm Summer days, air can circulate through the house, and you have peace of mind that children cannot run out or intruders cannot get in.



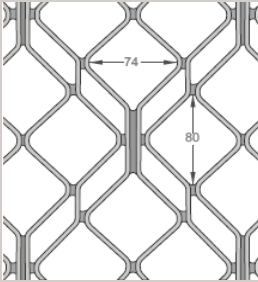
## GRILLE OPTIONS



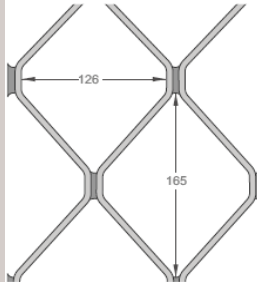
Grille 103



Grille 125



Grille 122



Grille 106

## ADDITIONAL FEATURE



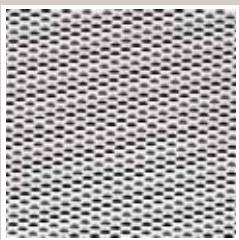
### Pet Resistant Mesh

Made of vinyl-coated polyester this fabric is much heavier than traditional fibreglass or aluminium screening. Resistant to tears and damage caused by pets.



### Pet Doors

These doors fit simply to all standard Security Doors using an adaptor bracket. They are made from UV stabilised plastic, they have magnetic closures and are available in 2 colours, black and white.



### Look-out™ One Way Vision Mesh

With the correct lighting One Way Vision Mesh allows a person on the inside to see out and not be seen from the visitors side.



### Triple Point Locking Systems

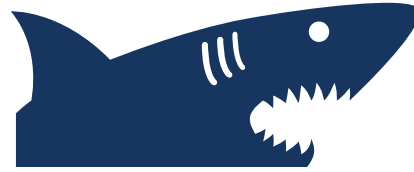
Triple Point Locks anchor the door at the top, middle and bottom for extra Security.

**D-Plate** prevents tearing of mesh when opening the door.

**The Heavy Duty Closer** is a pneumatic door closer with speed adjustment and hold open facility.

## AMPLIMESH® & SUPASCREEN® SECURITY AT A GLANCE

AUTHORISED DEALER



**AMPLIMESH®**  
SECURITY PRODUCTS

SUPASCREEN®

AMPLIMESH®

SPECIFICATIONS

Heavy Duty Frame	•	•
Heavy Duty Corner Stakes	•	•
Marine Grade 316 SS Mesh		•
7mm Grille 103,122,125 & 106	•	
Juralco Fibreglass Insect Mesh	•	
Window Systems	•	•
Hinged & Sliding Doors	•	•
Triple Point Locking		•
Tested to Standard AS5041*	•	•
<b>OPTIONS</b>		
Triple Point Locking	•	
Heavy Duty Closer	•	•
Pet Resistant Mesh	•	
Build Out Frame	•	•
Look-Out One Way Vision	•	
D-Plate	•	
Pet Doors	•	

\* Hinged doors



View with Amplimesh®



View with Supascreen®

**AMPLIMESH® GRILLE 106**



**AMPLIMESH® COMMERCIAL GRILLE 106**

Security Grille 106 is a larger sized grille that is recommended for Commercial use only. Ideal for Shop Fronts to provide a visual and physical deterrent to thieves and other unwanted guests.

This grille is part of the Amplimesh range which are known for the strength of materials used - heavy duty frame and heavy duty corner stakes.



**INTERCEPT® ROLLER SHUTTERS**



**INTERCEPT® ROLLER SHUTTERS**

These Roller Shutters are made from heavy-duty aluminium slats which roll down to protect your home while you are away and then roll out of sight when not in use. Also used for securing school and club cafeterias, kitchen cabinets, computer cabinets and boat cabins.

Operated by spring balance or motorised. Can be powder-coated in a wide range of colours to match any decor.



**KNIGHTGUARD® ROLLER GRILLES**



**KNIGHTGUARD® ROLLER GRILLE**

The quality and dependability of these Grilles are combined with innovative design to produce a wide range of custom-made commercial security products. Operated by Spring balance or motorised. Available in wide range of colours.



Visionline



Econolink

To guarantee customer satisfaction and meet a high standard of quality our products are only available from the most highly qualified retailers and tradesmen. You can refer to the address here and be confident that you will have a service that matches the quality of our products.

The products in this brochure are the subject of Industrial property protection.



Available from:

