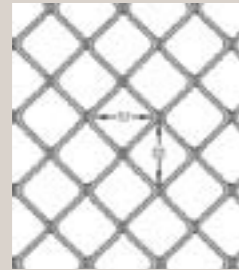


GRILLE OPTIONS



Grille 103



Grille 125



Grille 122



Grille 106 (Commercial)

ADDITIONAL FEATURES



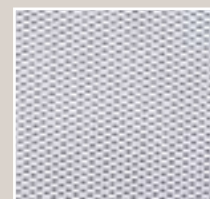
Pet Resistant Mesh

Made of vinyl-coated polyester this fabric is much heavier than traditional fibreglass or aluminium screening. Resistant to tears and damage caused by pets.



Pet Doors

These doors fit simply to all standard Amplimesh Security Doors. They are made from UV stabilised plastic, they have magnetic closers and are available in 2 colours, black or white.



Look-out™ One Way Vision Mesh

Look-out One Way Vision Mesh allows a person on the inside to see out and not to be seen from the visitors side.



Triple Point Locking Systems

Triple Point Security Locks anchor the door at the top, middle and the bottom for extra security.

D-Plate prevents tearing of mesh when opening or closing the security door.

Heavy Duty Closer available for hinged or sliding doors.

AMPLIMESH® & SUPASCREEN® SECURITY AT A GLANCE



AMPLIMESH®

SUPASCREEN®

S P E C I F I C A T I O N S	Heavy Duty Frame	•	•
	Heavy Duty Corner Stakes	•	•
	Marine Grade 316 SS Mesh		•
	7mm Grille Series 103, 122, 125 & 106	•	
	Juralco Fibreglass Insect Mesh	•	
	Window Systems	•	•
	Hinged & Sliding Doors	•	•
	Triple Point Locking		•
	Tested to Standard AS5041*		•
	OPTIONS		
Triple Point Locking		•	
Heavy Duty Closer		•	•
Pet Resistant Mesh		•	
Build Out Frame		•	•
Look-out One Way Vision Mesh		•	
D-Plate		•	
Pet Doors		•	

* Hinged Doors



View with Amplimesh®



View with Supascreen®

AMPLIMESH® GRILLE 106



AMPLIMESH® COMMERCIAL GRILLE 106

Security Grille 106 is a larger sized grille that is recommended for Commercial use only, and normally installed without Insect Mesh. Ideal for Shop Fronts to provide a visual and physical deterrent to thieves.

This grille is part of the Amplimesh range which is known for the strength of materials used - heavy duty frame and heavy duty corner stakes.



INTERCEPT® ROLLER SHUTTERS



INTERCEPT® ROLLER SHUTTERS

These Roller Shutters are made from heavy-duty aluminium slats which roll down to protect your home while you are away and then roll out of sight when not in use. Also used for securing school and club cafeterias, kitchen cabinets, computer cabinets and boat cabins.

Operated by spring balance or motorised. Can be powder-coated in a wide range of colours to match any decor.

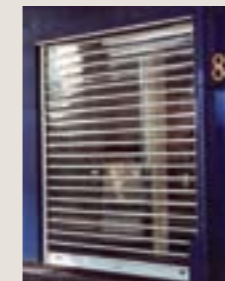


KNIGHTGUARD® ROLLER GRILLES



KNIGHTGUARD® ROLLER GRILLE

The quality and dependability of these Grilles are combined with innovative design to produce a wide range of custom-made commercial or residential security products. Operated by Spring balance or motorised. Available in a wide range of colours.



Visionline



Econalnk

To guarantee customer satisfaction and meet a high standard of quality Juralco Aluminium Systems are only available from the most highly qualified tradesmen. Authorised Amplimesh dealers are licenced to supply genuine Amplimesh Security Products. You can refer to the address here and be confident that you will have a service that matches the Amplimesh product quality.



Available from:

Authorised Amplimesh Dealer

JBR/SECURITY07



The products in this brochure are the subject of intellectual property protection. All brands are either trademarks of Juralco Aluminium Building Products Ltd or used under licence.



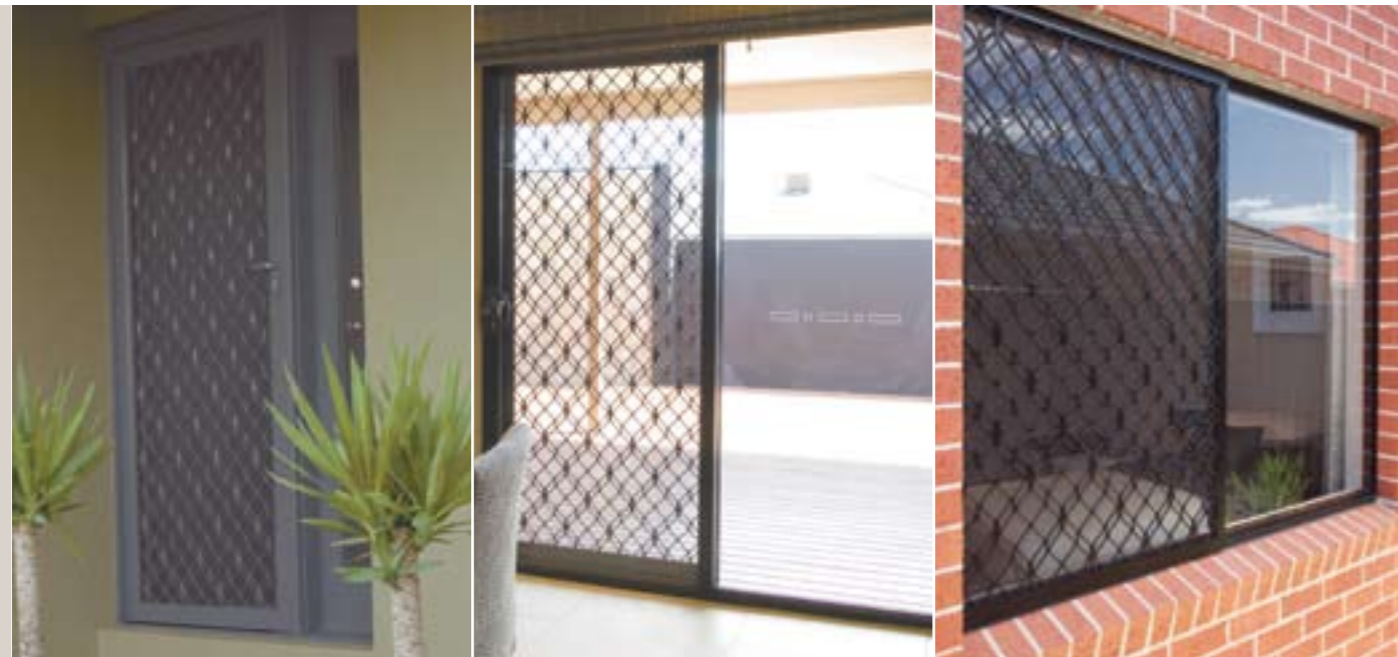
AMPLIMESH® & SUPASCREEN®

SECURITY DOORS & WINDOWS

AMPLIMESH® GRILLE 103



AMPLIMESH® GRILLE 122



AMPLIMESH® GRILLE 125



AMPLIMESH®



VISUAL DETERRENT TO UNWANTED GUESTS

Grille type windows and door screens provide a visual deterrent and effective protection against uninvited guests. Amplimesh custom-made Security Doors and Windows allow you to make the most of the warm weather by letting the breeze through your home - while still being secure, reducing the risk to you and your property.

Open windows and doors can make your home an enticing option for mosquitoes, flies and thieves. Avoid becoming another crime statistic and protect your home from unwelcome guests with Amplimesh Security Doors and Windows, the security choice of New Zealanders for over 40 years.

Amplimesh Security Grille Series 103,122 and 125 are recognised in the market place for the strength of materials used. With a minimum thickness of 7mm Amplimesh Grilles meet the requirements of Standard AS/NZ2803 (many competitors Grilles are much thinner than 7mm!) Powder-coating and anodising is finished to comply with appropriate Wanz surface finishing standards. Screens incorporate non-corrosive Juralco fibreglass insect mesh as standard.

All Grilles can be colour matched to existing joinery.

SPECIFICATIONS

Amplimesh Grille:	7mm Series 103, 122, 125, 106
Door Frame:	Series J9295 or J6661
Window Frame:	Series J5663 & J6179
Hinges:	Zinc Plated steel with stainless steel pins
Insect Mesh:	Juralco Fibreglass 18x16 Black Pet Resistant Mesh or Look-Out™ One-Way vision mesh
Locks:	Austral or Whitco single point or triple point locking systems
Colours:	Standard Colour Selection: Powder-Coated White, Off-White, Mid-Bronze, Anodised Bronze & Satin Silver
Custom Colours:	Matched to existing joinery

JURALCO AUSTRAL SECURITY DOOR LOCK OPTIONS*

				Caretaker™ Function NEW
The Ultimate™ for Hinged Doors	The Elegance™ for Hinged Doors	The SD7 Murray™ for sliding doors	Triple Point Locking System	Lock from the outside without a key, so that the person inside can easily unlock by snib (without key) - ideal in case of an emergency. When the house is unoccupied, it can be fully key dead-locked to meet insurance requirements. Included in Elegance and Ultimate door locks.
Caretaker function, Jemmy Resistant Parrot Beak lock tongue	Caretaker function, Jemmy Resistant deformable strike plate	Anti-lift pin on built-up strike prevents door being lifted out.	Door is held in place at the top, middle and bottom for extra Security. Available for Ultimate, Elegance & SD7 Murray	Jemmy Resistant Strike Plate
				Jemmy resistant strike plate deforms under attack, leaving door locked & secured. Standard for Ultimate and Elegance hinged door locks

* Whitco Tasman MK3 and Leichardt Locks (not illustrated) also available

SUPASCREEN®



SEE THROUGH SUPER STRENGTH MESH

SupaScreen may look like a flyscreen, but is actually high tensile marine grade 316 stainless steel woven into a fine mesh. SupaScreen is assembled using a unique, patented pressure process that eliminates the need for screws or rivets. The process ensures that different metal surfaces do not come into contact with each other, eliminating the possibility of corrosion.

SupaScreen has been independently tested to Standard AS5039 and hinged doors to Standard AS5041. Powder-coating and anodising is finished to comply with appropriate Wanz surface finishing standards.

SupaScreen doors come with high quality triple point locking systems as standard, firmly anchoring top, centre and bottom.

SPECIFICATIONS

	SupaScreen:	316 Marine Grade Mesh (Black Only)
	Door Frame:	Series J7295
	Window Frame:	Series J7711
	SupaScreen Patented Co-Extruded Plug Hinges:	Zinc Plated steel with stainless steel pins
	Locks:	Austral or Whitco triple point locking systems
	Colours:	Powder-Coated White, Off-White, Mid-Bronze, Anodised Bronze & Satin Silver
	Custom Colours:	Matched to existing joinery

AESTHETICALLY PLEASING

SupaScreen is particularly suited to front doors as it provides a welcoming entrance and won't compromise the appearance of your home or feature door. SupaScreen blends in aesthetically - the frames can be matched to existing joinery and the mesh gives clear visibility.

At the back of the house, SupaScreen gives you a clear, unobstructed view of your garden and the outdoors while letting the cool breeze flow through your home.

With SupaScreen installed, you can leave the doors open on warm Summer days, air can circulate through the house, and you have peace of mind that children cannot run out or intruders cannot get in. Insist on SupaScreen when looking for total barrier protection without compromise.

